



COASTAL JIBS

Snowpark equipment
2024/2025 • CATALOG



We have come a long way since the very first rail was built and brought to our local ski and snowboard hill over 18 years ago! It has been a challenging but rewarding journey. From day 1, our constant drive to improve our products and services has never stopped and has helped us develop a large number of satisfied clients. It is a great privilege for us to be a part of the skiing and snowboarding industry, and we look forward to the next 15 years of exceeding your expectations in product quality and safety!

Some figures...

Over the years, we have built more than 1,700 features, used approximately 140,000 feet of pipe and steel tubing, 2,500 sheets of plastic, and over 115,000 nuts and bolts!

Thank you to everyone who has been involved along the way!

Catalogue Coastal Jibs 2024
© Coastal Jibs. 2024

Printing: Précigrafik
Graphic Design: Myriam Lemire
3D Design: Brendan O'Brien
Editing: James Mackeigan and Mathieu Martel
Text: René Caza, Benjamin Mbemba
and Pierre-Étienne St-Armand

Any reproduction, printing, or adaptation of this publication, by any means, whether electronic, mechanical, photographic or microfilm, cannot be done without prior permission of Coastal Jibs Inc.



CONTENTS

- Quality Warranty04
- Sliding Options05
- Technical Overview06
- Mini-Shred Features 10
- Junior Features12
- Classic Features16
- Transfer Features.....26
- Pipes28
- Jibs.....34
- Wall Rides40
- Custom Features44
- Snowtools46
- Accessories48
- Other Services.....50
- Photo Credits51

While some people may think of skiing and snowboarding as great outdoor activities, we feel it's a way to express our individuality within every motion and detail.

When it comes to engineering new features, connecting metal pieces together or refurbishing our customers' installations, the same attention to detail goes into our products and services and is what sets us apart.

It's our responsibility to stay current with trends while providing safe options that promote growth and foster excitement. That's why my team and I are fully committed to offering the best products across North America

Richard Côté
Founder / President



Mont Tremblant QC



QUALITY

At Coastal Jibs, we put our heart and soul into creating a premium quality product that goes beyond expectations. Our entire product line is carefully handcrafted in our Sherbrooke (Québec) workshop to ensure a quality that is truly unbeatable!



WARRANTY

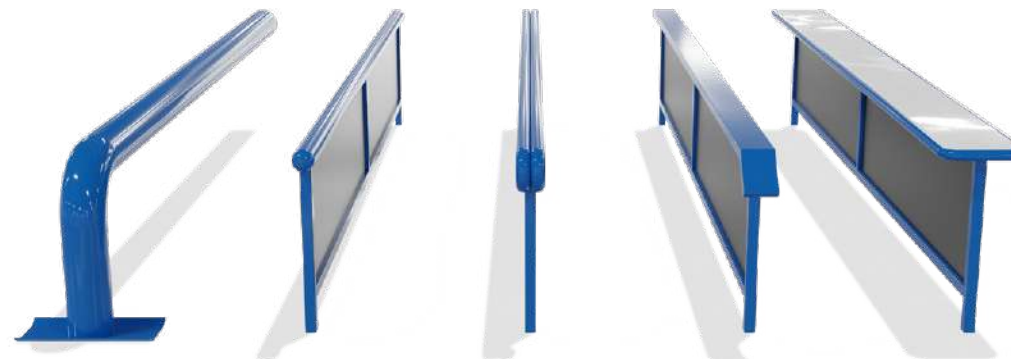
Coastal Jibs offers a 5-year limited warranty on all of its product. Colligated with the refurbishment program, a 10-year extended warranty is also available.

* This warranty does not apply to any failure, damage or defect caused by the installation, use or maintenance of the product by the buyer, its employees, customers, users, successors or assigns.

SLIDING OPTIONS



Innovation plays a large roll at Coastal Jibs which is why we offers several sliding surfaces that suit all skill levels. We also offer custom built features to meet all of your specific needs.



PIPE
Diameter: 6" | 8" | 10"



SINGLE PIPE
Diameter: 4" | 6"



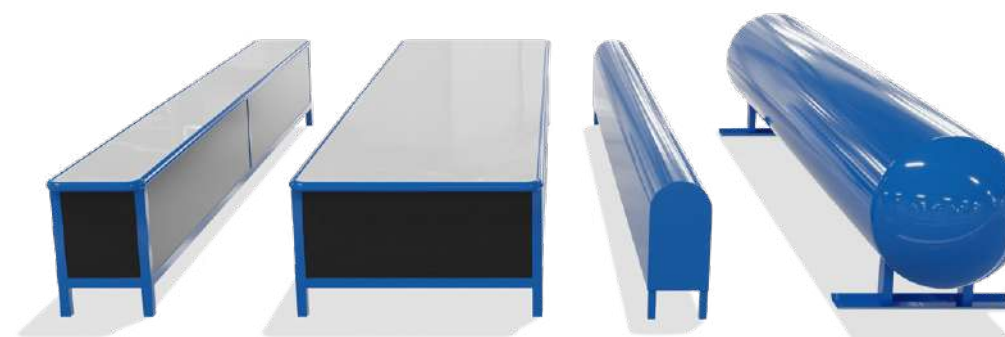
DOUBLE PIPE
Width: 5"



HSS TUBING
Width: 5" | 6"



"T" BOX
Width: 10" | 14"



FULL BOX
Width: 14" | 18" | 24"



DANCEFLOOR
Width: 42"



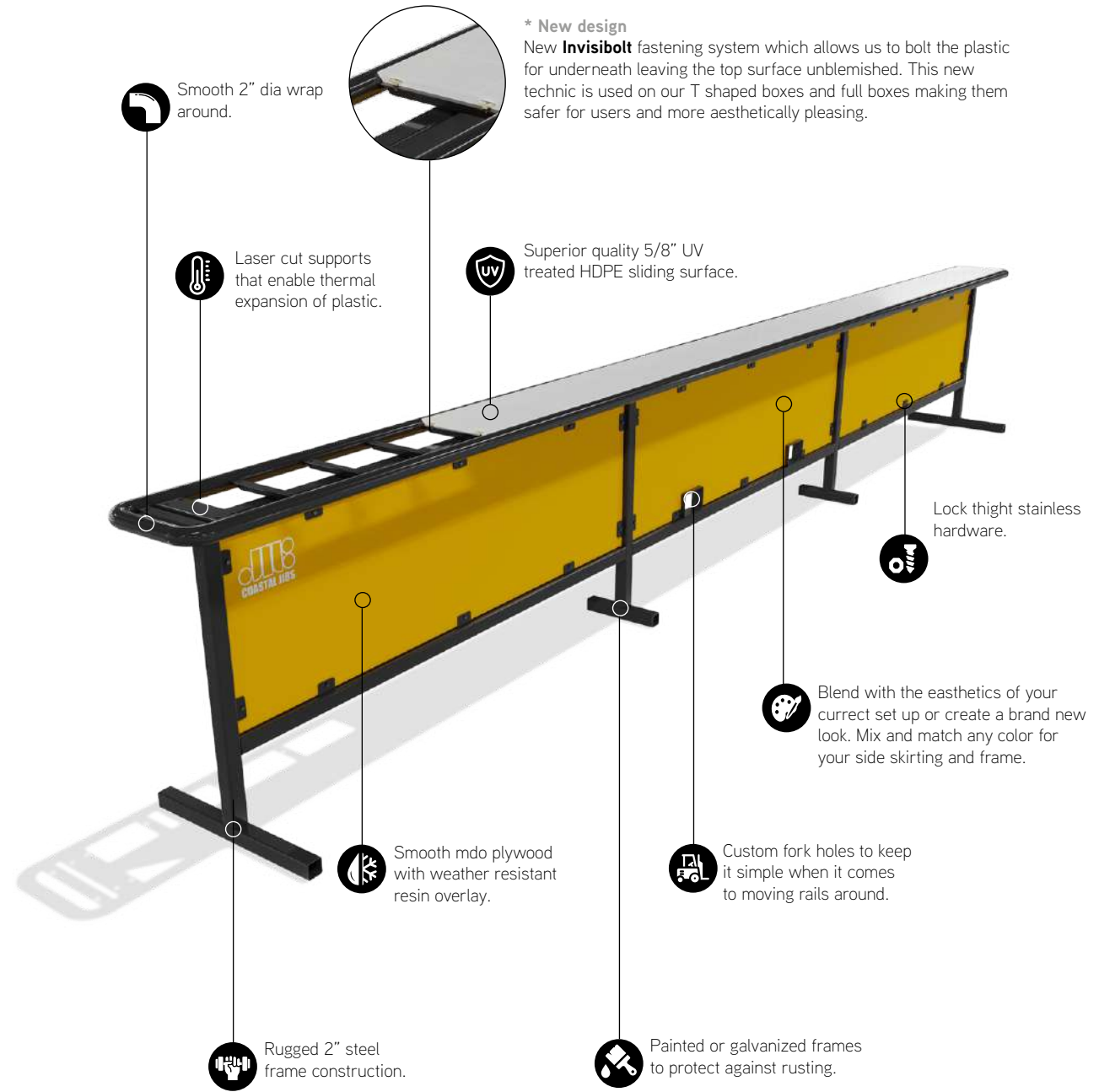
MAILBOX
Width: 16" | 30"



JIBTANK
Diameter: 20" | 24" | 30" | 60"

TECHNICAL OVERVIEW

Everything is in the details



OUR PRODUCT REFLECTS OUR
PASSION FOR THE SPORTS

Apik Fest 2024
Montréal, QC





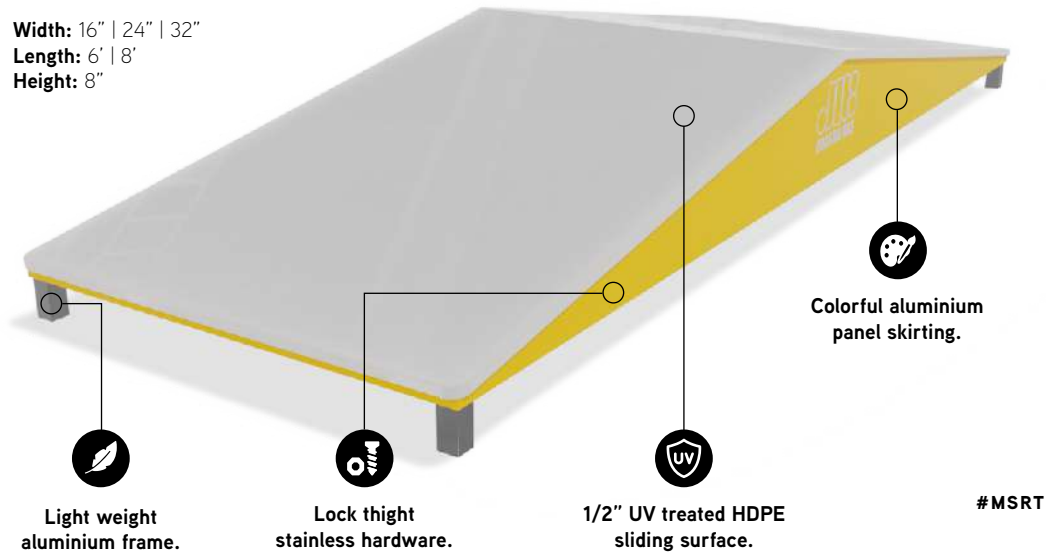
MINI-SHRED FEATURES

Designed for the next generation

The range of Mini shred features has been designed to target young riders. The miniature sizes as well as the nonexistent metal side pro le make these accessible and safe for the kids. Thanks to their ground level entry and exit points, the Mini Shred features allow the little riders to enjoy an eased learning experience from their very first day at the mountain!

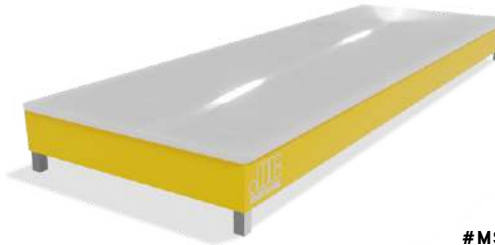
MINI ROOFTOP

Width: 16" | 24" | 32"
Length: 6' | 8'
Height: 8"



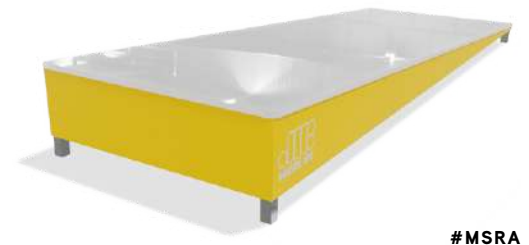
MINI FLAT

Width: 16" | 24" | 32"
Length: 6' | 8'
Height: 6"



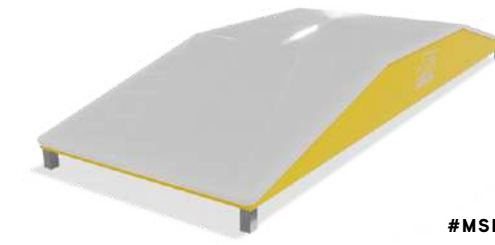
MINI RAMP

Width: 16" | 24" | 32"
Length: 6' | 8'
Height: 8"



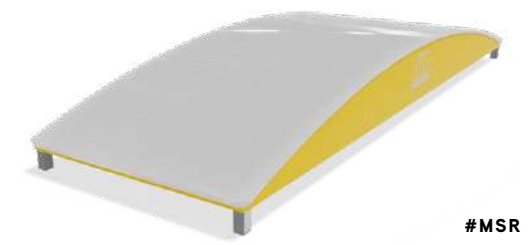
MINI BATTLESHIP

Width: 16" | 24" | 32"
Length: 6' | 8'
Height: 8"



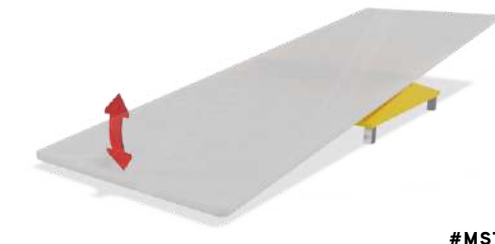
MINI RAINBOW

Width: 16" | 24" | 32"
Length: 6' | 8'
Height: 8"



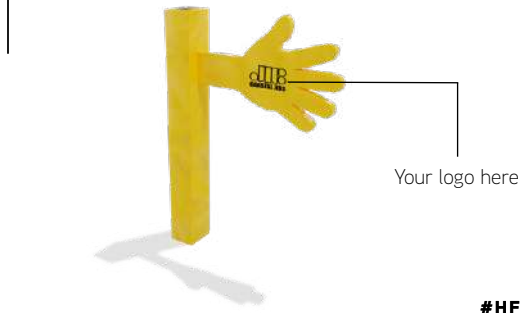
TEETER TOTTER

Width: 16" | 24" | 32"
Length: 8'
Height: 10"



HIGH FIVE

Height: 36" | 60"





JUNIOR FEATURES

The first step to progress

The junior series consists of unique beginner obstacles that are ideal for all age groups. The wider surfaces and relaxed angles allow for entry-level skiers and riders to initiate themselves into the exciting world of rails and boxes. The higher skilled skiers and riders can also practice and perfect their technique safely on these mellow features!



JR BUTTERBOX

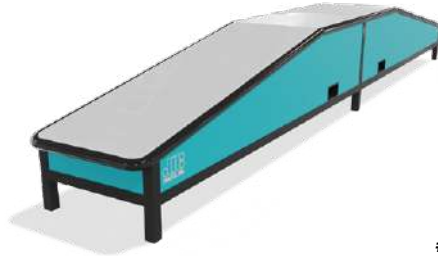
Length: 12' | 16'
Height: 24"



#JBU

JR SUNKEN SHIP

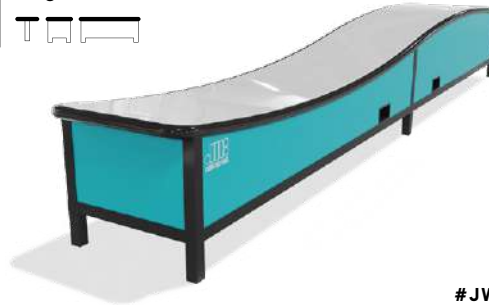
Length: 12' | 16'
Height: 34"



#JBA

JR WAVE

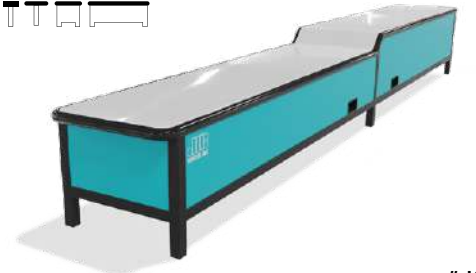
Length: 16' | 20'
Height: 34"



#JWA

JR STEP-DOWN

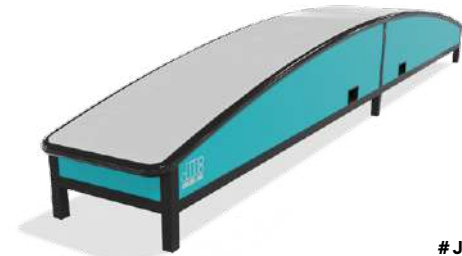
Length: 12' | 16'
Height: 28"



#JSD

JR RAINBOW

Length: 12' | 16'
Height: 30"



#JRB

JR RIDE ON

Length: 12' | 16'
Height: 24"



#JRO

JR WHIP

Length: 12' | 16'
Height: 30"



#JWP

JR ROCKER

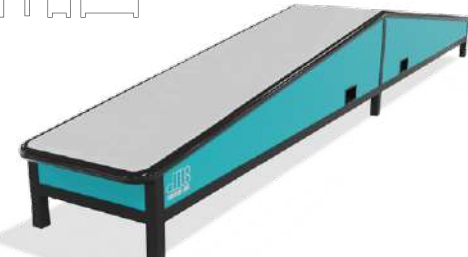
Length: 12' | 16'
Height: 30"



#JRK

JR ROOFTOP

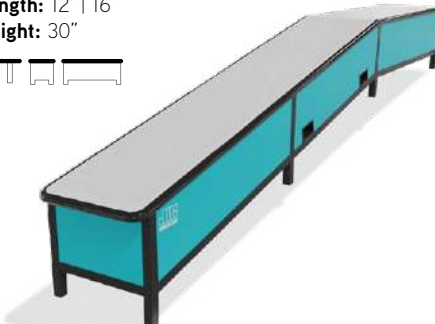
Length: 12' | 16'
Height: 30"



#JRT

JR FLAT DOWN

Length: 12' | 16'
Height: 30"



#JFD

JR TUBE

Length: 12' | 16'
Height: 30"



#JTU



Georgian Peaks, ON



CLASSIC FEATURES

Never out of style

All you could ever ask for! Over 500 formats available for intermediate to expert level skiers and riders. Every feature is available in different sliding surfaces. The right mix of classic features provides diversity and creativity for your terrain park. From a 4 in. diameter single pipe to a 42 in. dance floor. Coastal Jibs can meet the needs of all skill levels.





FLAT

Length: 16' | 20' | 24' | 32' | 40'
Height: 34"



#F

COPING BOX

Length: 8' | 16' | 20' | 24'
Height: 36"



#CP

JAMMIN'

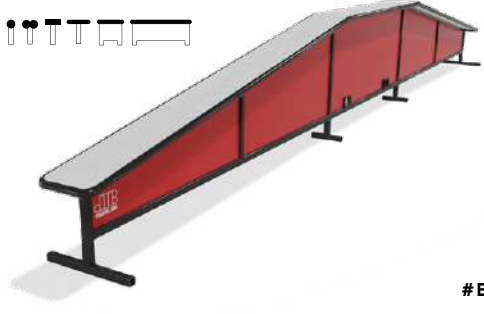
Length: 16' | 20' | 24' | 32' | 40'
Height: 34"



#JMN

BATTLESHIP

Length: 24' | 32' | 40'
Height: 48" | 60"



#BA

FLAT DOWN

Length: 20' | 24' | 32' | 40'
Height: 34"



#FD

ROOFTOP

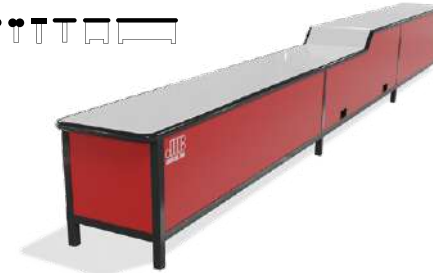
Length: 20' | 24' | 32'
Height: 48" | 60"



#RF

STEP-DOWN

Length: 20' | 24' | 32'
Height: 28" | 34"



#SDN

WATERFALL

Length: 24' | 30' | 36'
Height: 40"



#WF

STREET DONKEY

Length: 16' | 20' | 24' | 32'
Height: 34"



#SSD

KICKER

Length: 16' | 20' | 24' | 32'
Height: 48"



#K



Shawnee Mountain, PA





FIRECRAKER

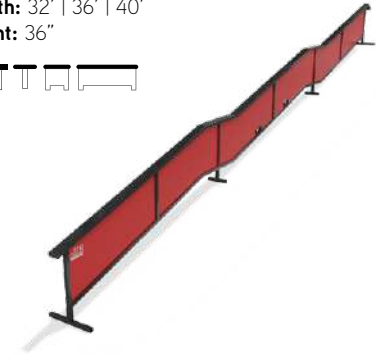
Length: 16' | 20' | 24' | 32'
Height: 34"



#FC

QUAD KINK

Length: 32' | 36' | 40'
Height: 36"



#QK

DOUBLE ELBOW

Length: 24' | 32'
Height: 34"



#DEL

DOWN-FLAT-DOWN

Length: 24' | 28' | 36' | 40'
Height: 34"



#DK

Y SHAPE

Length: 20' | 24' | 32'
Height: 34"



#Y

ELBOW

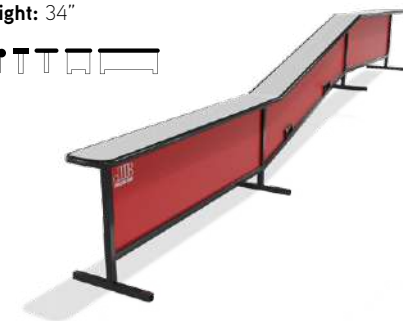
Length: 20' | 24' | 32'
Height: 34"



#EL

FLAT-DOWN-FLAT

Length: 24' | 32' | 36' | 40'
Height: 34"



#FK

BARN BOX

Length: 16' | 20' | 24' | 32'
Height: 40"



#BRN

SHOT-DOWN

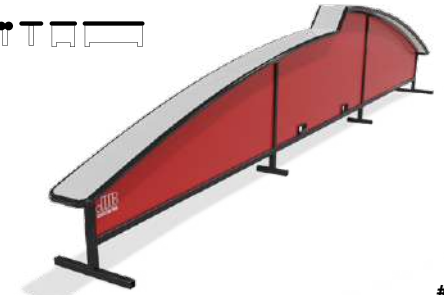
Length: 20' | 24' | 32' | 40'
Height: 48"



#SD

DROP BOW

Length: 20' | 24' | 32'
Height: 24" | 60"




#DB




Owl's Head, QC






 Mont-Tremblant, QC



 Saint-Constant, QC



 Saint-Sauveur, QC



 Morin-Heights, QC



Mont-Sainte-Anne, QC

ROCKER

Length: 20' | 24' | 32'
Height: 40" | 60"



#U

MUSTACHE

Length: 20' | 24' | 32'
Height: 42"



#MT

MACHETE

Length: 20' | 24' | 32' | 40'
Height: 40"



#MA

WAVE

Length: 24' | 32' | 40'
Height: 42"



#W

CAMEL

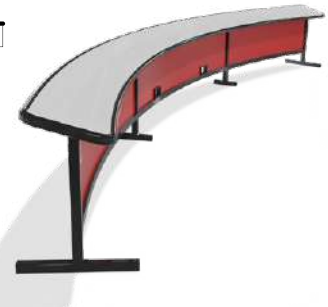
Length: 32' | 40'
Height: 42"



#CA

CURVE

Length: 16' | 20' | 24' | 32'
Height: 34"



#C

RAINBOW

Length: 20' | 24' | 32'
Height: 60" | 72"



#RB

RAINBOW C

Length: 16' | 20' | 24' | 32'
Height: 48" | 72"



#RC

S SHAPED

Length: 32' | 36' | 40'
Height: 34"



#S

SNAKE RAIL

Length: 32' | 36' | 40'
Height: 36"



#SN



Mont Tremblant, QC

TRANSFER FEATURES

Elevate your Transfer game

A rail transfer involves the art of seamlessly jumping from one rail or sliding surface to another while executing tricks or maneuvers, demanding a blend of precise timing, balance, and skill. These transfers are often observed in the current scene of street and competitive skiing and snowboarding and allows riders to showcase their abilities.

The features below provide a safe and user-friendly way to unleash creativity with transfers even enabling you to slide on two rails simultaneously!

BUTTER PIPE

Length: 16' | 20' | 24' | 32'
Height: 34"



#BP

DOUBLE WHAMMY

Length: 20' | 24' | 32'
Height: 34"



Option: One side removable
#DW

DOUBLE ROOFTOP

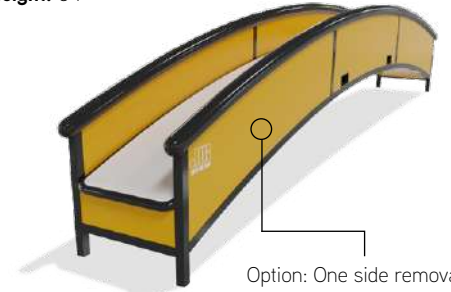
Length: 20' | 24' | 32'
Height: 34"



Option: One side removable
#DRT

DOUBLE RAINBOW

Length: 20' | 24' | 32'
Height: 34"



Option: One side removable
#DR

PICNIC

Length: 12' | 16' | 20' | 24' | 32'
Height: 36"



#PN

X BOX

* New design

Length: 20' | 24' | 32'
Height: 48" | 60"



#X

FLAT DOWN TRANSFER

Length: 20' | 24' | 32'
Height: 34"



#FDT

CREEPER BANK

Length: 16' | 20' | 24' | 32'
Height: 40"



#CBK

PIPES

Endless trick possibilities

Drawing their inspiration from the industrial scene, the pipes mimic the wacky forms of plant piping, providing a unique look. The wide diameter of these tubes allows a large contact surface, which facilitates the sliding for the riders. Their rounded shapes are the perfect solution to make the complex modules even safer.





FLAT

Length: 16' | 20' | 24' | 32' | 36'
Height: 36"
Diameter: 6" | 8" | 10"



#PF

SWAT PIPE

Length: 16' | 20' | 24' | 36'
Height: 34"
Diameter: 6" | 8" | 10"



#PSP

STEP DOWN

Length: 20' | 24' | 32' | 36'
Height: 42"
Diameter: 6" | 8" | 10"



#PSD

WATERFALL

Length: 24' | 32' | 36'
Height: 48"
Diameter: 6" | 8" | 10"



#PWF

FLAT DOWN

Length: 20' | 24' | 32' | 36'
Height: 36"
Diameter: 6" | 8" | 10"



#PFD

ROOFTOP

Length: 20' | 24' | 32' | 36'
Height: 60" | 72"
Diameter: 6" | 8" | 10"



#PRT

SIDE SKIRTING

All pipes are also available with side skirting.



DOWN FLAT

Length: 16' | 20' | 24' | 32'
Height: 36"
Diameter: 6" | 8" | 10"



#PDF

DOWN FLAT DOWN

Length: 24' | 32' | 36'
Height: 36"
Diameter: 6" | 8" | 10"



#PDK



Mont Comi, QC



ELBOW

Length: 20' | 24' | 32' | 36'
Height: 36"
Diameter: 6" | 8" | 10"



#PE

BATTLESHIP

Length: 24' | 32' | 36'
Height: 56" | 72"
Diameter: 6" | 8" | 10"



#PBA

Z SHAPE

Length: 24' | 32' | 36'
Height: 36"
Diameter: 6" | 8" | 10"



#PZ

Y SHAPE

Length: 20' | 24' | 32' | 36'
Height: 36"
Diameter: 6" | 8" | 10"



#PY

WAVE PIPE

Length: 24' | 32' | 36'
Height: 42"
Diameter: 6" | 8"



#PW

C SHAPE

Length: 16' | 20' | 24' | 32'
Height: 36"
Diameter: 6" | 8"



#PC



S SHAPE

Length: 24' | 32' | 36'
Height: 36"
Diameter: 6" | 8"



#PS

RAINBOW

Length: 16' | 20' | 24' | 32'
Height: 60" | 72"
Diameter: 6" | 8"



#PR

ROCKER PIPE

* New

Length: 16' | 20' | 24' | 32'
Height: 60" | 72"
Diameter: 6" | 8"



#RKP

HICCUP

Length: 20' | 24' | 32' | 36'
Height: 42"
Diameter: 6" | 8" | 10"



#PHC





JIBS

Release your creativity

Our Jibs series consists of unique shaped features, which presents multiple trick possibilities to all the hard-core jibbers out there. These are built mostly out of metal for an old school feel.



JIB TANK

Length: 8' | 16' | 20' | 24' | 30'
Diameter: 20" | 24" | 30" | 60"



#TNK

ELBOW TANK

Length: 20'
Diameter: 20" | 24" | 30"



#ETK

JERSEY BARRIER

Length: 10' | 12' | 14' | 16'
Height: 36"



#JB

GATE

Length: 14'
Height: 40"
Diameter: 6"



#GA

ROOFTOP TANK

Length: 20' | 24'
Diameter: 20" | 24" | 30"



#RTK

DONKEY TANK

Length: 16' | 20' | 24'
Diameter: 20" | 24" | 30"



#DKT

TOBLERON

Length: 12' | 16' | 20' | 24'
Height: 60"



#TBL

LOLLIPOP

Height: 77" | 90"
Diameter: 30" | 40"



#LP

FLAT-DOWN TANK

Length: 20' | 24' | 32'
Diameter: 20" | 24" | 30"



#FDK

DOWN-FLAT-DOWN TANK

Length: 24' | 28' | 36' | 40'
Diameter: 20" | 24" | 30"



#DFT

MUSHROOM

Height: 5'
Diameter: 36" | 48"



#MU

BALL

Diameter: 37"



#BL





CONVEYOR

* New

Length: 16' | 20' | 24'
Width: 36"
Height: 22"



#OT

CANON

Length: 12' | 14' | 16' | 20'
Diameter: 6" | 8" | 10"



#CA

POLE JAM

Length: 6' | 8' | 10'
Diameter: 4" | 6" | 8"



#PJ

MAILBOX

Length: 10' | 12' | 16' | 20' | 24'
Width: 16" | 30"
Height: 24"



#ML

KINKED MAILBOX

Length: 20' | 24' | 32'
Width: 16" | 30"
Height: 24"



#KML

JUNK MAIL

Length: 24' | 28' | 32'
Width: 16" | 30"
Height: 24"



#JML



Brian Head, UT



WALLRIDE FEATURES

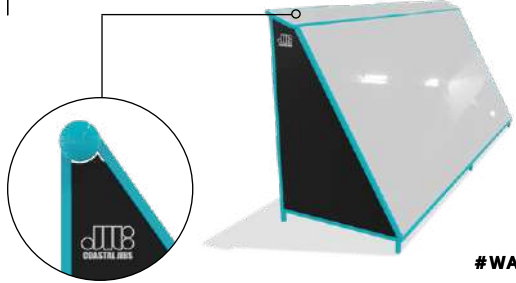
The centerpiece of your snowpark

Wall rides are often some of the biggest and most impressive features of any terrain park. Their large surfaces are ideal display areas for graphics and sponsor logos. To facilitate the moving of wall rides, we weld them to a ski-type frame, so they can be slid rather than lifted! All wall surfaces are covered with HDPE plastic to ensure the best sliding sensation.



WALLRIDE

Length: 8' | 16' | 20' | 24'
 Height: 8'
 *Also offered with a pipe option



#WA

ROOF

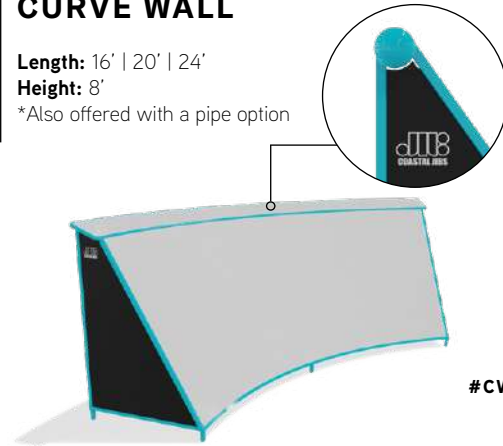
Length: 16' | 20' | 24'
 Height: 48"



#RF

CURVE WALL

Length: 16' | 20' | 24'
 Height: 8'
 *Also offered with a pipe option



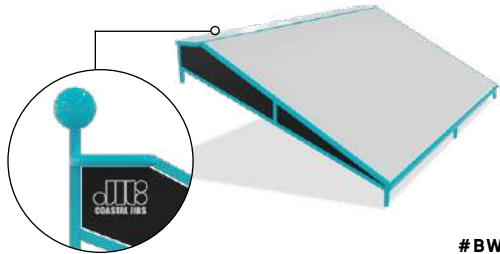
#CW



Horseshoe Resort, ON

BANKED WALL

Length: 16' | 20' | 24'
 Height: 24"
 *Also offered with a pipe option



#BW

STAR WARS

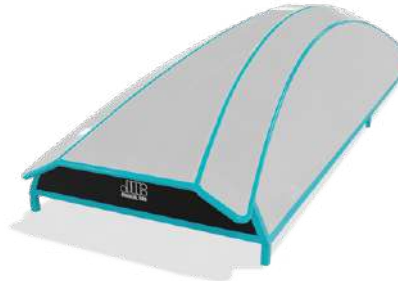
Length: 16' | 20' | 24' | 32'
 Height: 60" | 72"



#STW

TURTLE SHELL

Length: 20' | 24' | 32'
 Height: 48" | 60"



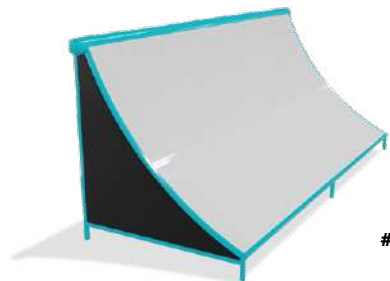
#TS



Mont Tremblant, QC

QUARTER PIPE

*New
 Length: 8' | 16'
 Height: 75"



#SP

SPINE

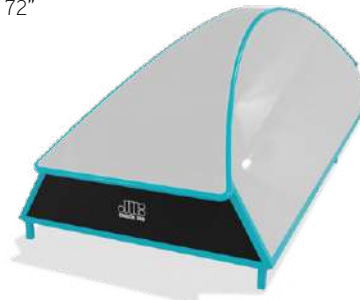
Length: 8' | 16' | 20'
 Height: 72"



#SP

RAINBOW WALL

Length: 16' | 20' | 24' | 32'
 Height: 72"



#RW

CUSTOM FEATURES

Let your imagination run free

At Coastal Jibs, we provide top quality event set-ups that will blow the mind of your competitors and spectators. We offer custom features allowing you to create the course of your dreams! Whether it's replicating an existing urban environment with complex staircase configurations or creating a unique set up that will give you the atmosphere you want, we can do it all! Sponsors and media play a big role in the event world and we want to help you make an impact by creating something original. Challenge us with your ideas and visions and we will make your projects become reality!

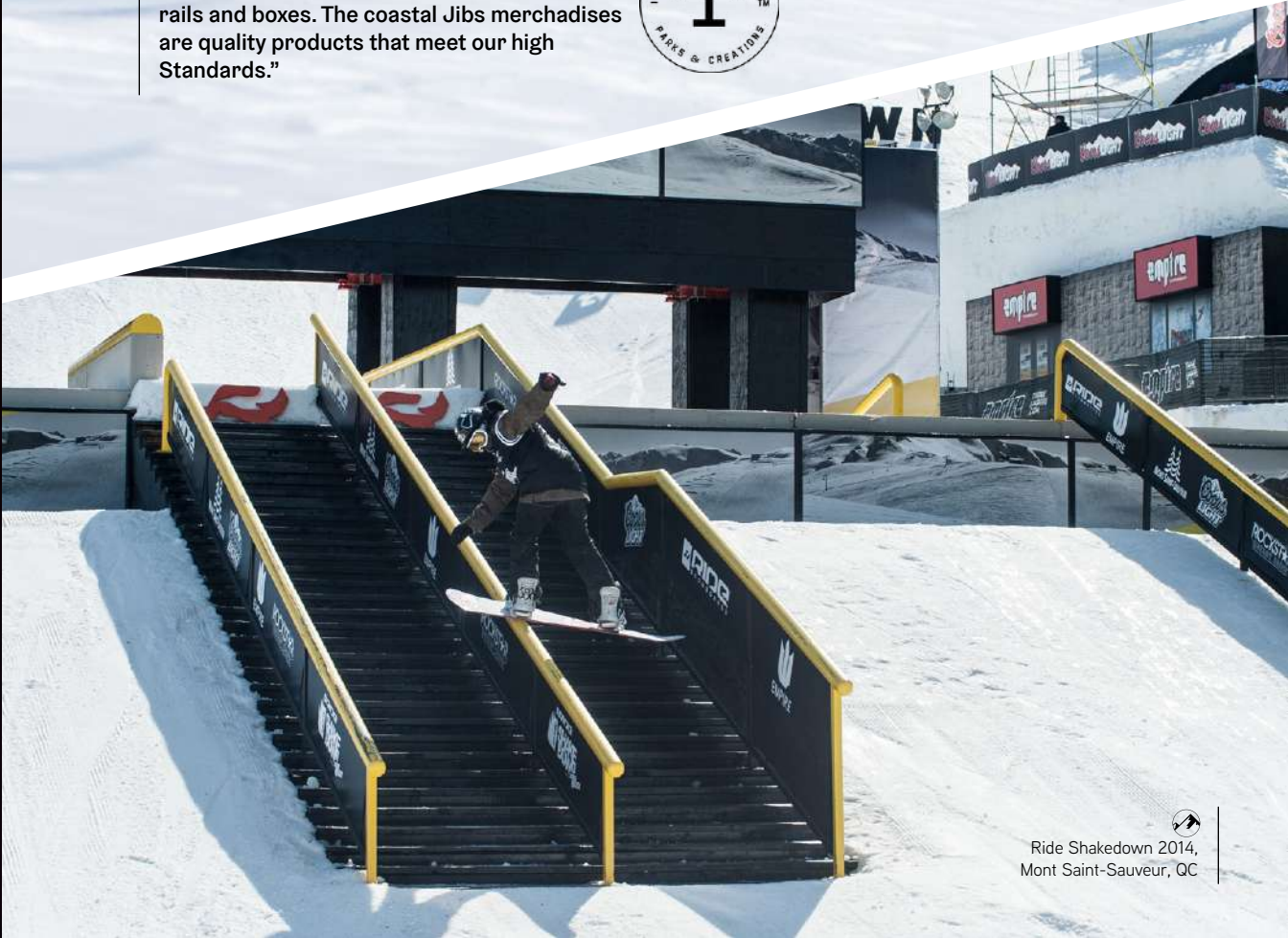


Mont Corni, QC



Mont Saint-Sauveur, QC

"We always trust coastal jibs for the manufacture of our terrain parks and events rails and boxes. The coastal Jibs merchandises are quality products that meet our high Standards."



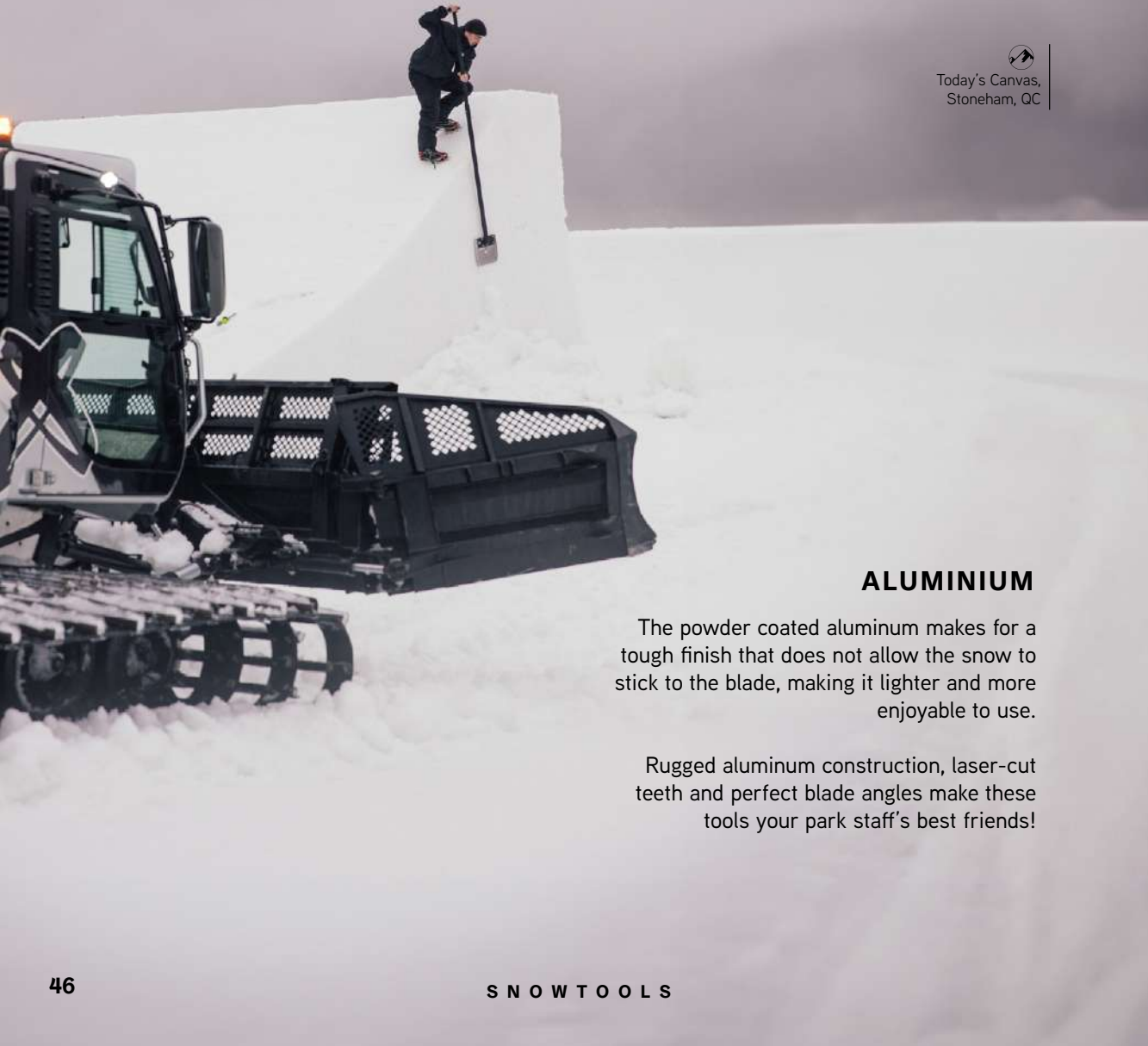
Ride Shakedown 2014,
Mont Saint-Sauveur, QC



SNOWTOOLS

Your park staff's best friends

Would you cut steak with a plastic knife? Neither would we. Building a nice terrain park is one thing but maintaining it is a different story. That is why we offer specialized snowtools that can make your job more enjoyable. The versatility of these tools lets you accomplish your job more efficiently and faster than ever before.



Today's Canvas,
Stoneham, QC

ALUMINIUM

The powder coated aluminum makes for a tough finish that does not allow the snow to stick to the blade, making it lighter and more enjoyable to use.

Rugged aluminum construction, laser-cut teeth and perfect blade angles make these tools your park staff's best friends!

SCOOP

Length: 60"
Width: 26"

Digging out features after a big dump of snow? No problem! The large scoop has a larger blade that allows you to move great quantities of snow around. Ideal for heftier tasks.



SWINGER

Length: 60"
Width: 26"

From maintaining lift stations to working on pipe transitions, the Swinger is the ideal snow tool for all jobs, whether small or medium sized. Its lightweight and sharp teeth allow you to easily cut through hard snow and ice.

*Junior model available



VERT SHOVEL

Length: 60"
Width: 10"

This razor-sharp stainless steel blade will make the sides of your jumps look like Lego Blocks! Ideal for shaping hips, berms, and anything that needs a precise clean cut.

* D-shape Telescopic handle option







 Ski La Réserve, QC

ACCESSORIES

All you ever needed

PARK BENCH

Length: 8' | 12' | 16'
Height: 36"



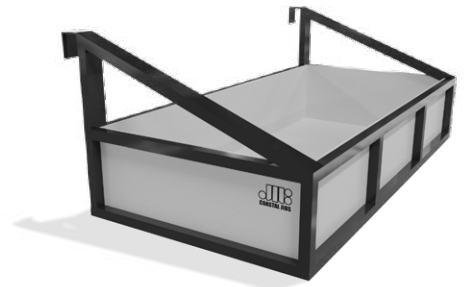
TRAFFIC GATES

* New design
Length: 4' | 6' | 8'
Height: 35"



BASKET

Length: 4'
Width: 6'



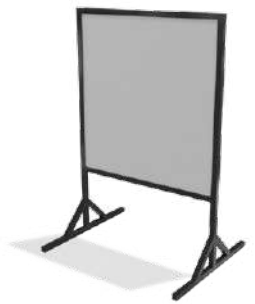
ADJUSTABLE GROOMER FORKS

Length: 54"
Width: 1' - 5'



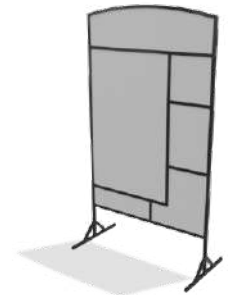
SIGN FRAMES

Width: 24' | 36'
Height: 4' | 8'



MULTI SIGN FRAME

Width: 48"
Height: 10'





 Le Relais, QC

GRAPHICS

Advertisement and graphics often play a large role in the everyday Terrain Parks. The unique shapes and large display areas of rails and boxes become the ideal location for your resort's logos and sponsors! We offer top quality vinyl graphics and artwork on our smooth side panels. Ask us for more details.

DELIVERY

Coastal Jibs offers delivery at extremely reasonable rates across Canada & U.S., not to mention FREE shipping on park orders of at least \$25,000 CAD within a 1500km radius of our headquarters.



 Coastal Jibs, QC


Saint-Constant, QC 




PHOTO CREDITS

- Cover page: 33, 40 : **Vit Sarse**
- P2 : **Will Devereux**
- P4 : **Kevin Lemaire**
- P6, 24, 39.2 : **Chartrand Photography**
- P8, 20, 22.1, 22.3, 23, 34, 51.2 : **Jaysson Gallant**
- P10 : **Burton Snowboards**
- P12 : **Pat Bly via Whiteface Mountain**
- P15 : **James MacKeigan**
- P16 : **Jay Stewart**
- P19 : **Robert Farris**
- P22.2 : **Paul Mackay**
- P26, 50 : **Richard Côté**
- P28 : **Joel McDowell**
- P31 : **Snowmission**
- P39.1 : **Jessee Lynch**
- P43.1 : **Joseph Roby**
- P43.2 : **Geoffroy Dubreuil**
- P44 : **Oli Delisle**
- P45.1 : **Alain Denis**
- P45.2 : **René-Pierre Normandeau**
- P46, 48 : **Today's Parks**
- P50 : **Adrenaline Urbaine**
- P51.1 : **Shaun Ballabey**
- P52 : **Micheal Thibeault**
- P53.1 : **Julien Visse**
- P53.2 : **Ariana Sanchez**



 Owl's Head, QC




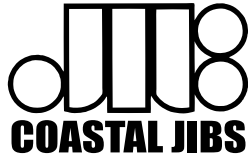
 Poley Mountain, NB



 Winter Park, CO



 Stoneham, QC



WE BUILD WHAT YOU RIDE

2024-2025

1 819 238-5427

mail@coastaljibs.ca

www.coastaljibs.ca

4085 Lesage Street, Sherbrooke (QC)
J1L 2Z9, Canada.

