

COASTAL JIBS

Snowpark equipment



2020/2021 • CATALOG

We have come a long way since the very first rail was built and brought to our local ski and snowboard hill over 14 years ago! It has been a challenging but rewarding journey. From day 1, our constant drive to improve our products and services has never stopped and has helped us develop a large number of satisfied clients. It is a great privilege for us to be a part of the skiing and snowboarding industry, and we look forward to the next 14 years of exceeding your expectations in product quality and safety!

Some figures....

Over the years, we have built more than 1000 features, used approximately 80,000 feet of pipe and steel tubing, 800 sheets of PE plastic, 1,800 sheets of plywood and aluminum and over 65,000 nuts and bolts!

Thank you to everyone who has been involved along the way!



Coastal Jibs 2020-2021 Product Catalog
© Coastal Jibs. 2020
Printing: Précigrafik
Graphic Design: Vincent Arnold
3D Design: Brendan O'Brien
Editing: James Mackeigan
Text: René Caza, Benjamin Mbemba
and Pierre-Étienne St-Armand

Any reproduction, printing, or adaptation of this publication, by any means, whether electronic, mechanical, photographic or microfilm, cannot be done without prior permission of Coastal Jibs Inc.

CONTENTS

Quality Warranty _____ 04

Sliding Options _____ 05

Technical Overview _____ 06

Mini-Shred Features _____ 10

Junior Features _____ 12

Classic Features _____ 16

Pipes _____ 28

Jibs _____ 34

Wall Rides _____ 40

Custom Features _____ 44

Snowtools _____ 46

Accessories _____ 48

Other Services _____ 50

Photo Crédits _____ 51

While some people may think of skiing and snowboarding as great outdoor activities, we feel it’s a way to express our individuality within every motion and detail.

When it comes to engineering new features, connecting metal pieces together or refurbishing our customers’ installations, the same attention to detail goes into our products and services and is what sets us apart.

It’s our responsibility to keep up with trends while providing safe options to encourage progression and stimulate excitement, and that’s why my team and I are fully committed to offering the best products in all of North America.

Richard Côté
Founder / President



Sugarloaf Park, NB



QUALITY

At Coastal Jibs, we put our heart and soul into creating a premium quality product that goes beyond expectations. Our entire product line is carefully handcrafted in our Sherbrooke (Québec) workshop to ensure a quality that is truly unbeatable!



WARRANTY

Coastal Jibs offers a 5-year limited warranty on all of its product. Colligated with the refurbishment program, a 10-year extended warranty is also available.

* This warranty does not apply to any failure, damage or defect caused by the installation, use or maintenace of the product by the buyer, its employees, customers, users, successors or assigns.



SLIDING OPTIONS

Innovation plays a large roll at Coastal Jibs which is why we offers several sliding surfaces that suit all skill levels. We also offer custom built features to meet all of your specific needs.



PIPE

Diameter: 6"|8"|10"



SINGLE PIPE

Diameter: 4"|6"



DOUBLE PIPE

Width: 5"



HSS TUBING

Width: 5"|6"



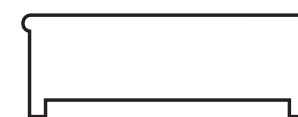
"T" BOX

Width: 10"|14"



FULL BOX

Width: 18"|24"



DANCEFLOOR

Width: 42"



MAILBOX

Width: 16"|30"



JIBTANK

Diameter: 20"|24"|30"|60"



TECHNICAL OVERVIEW

Everything is in the details



Smooth 2" dia wrap around.



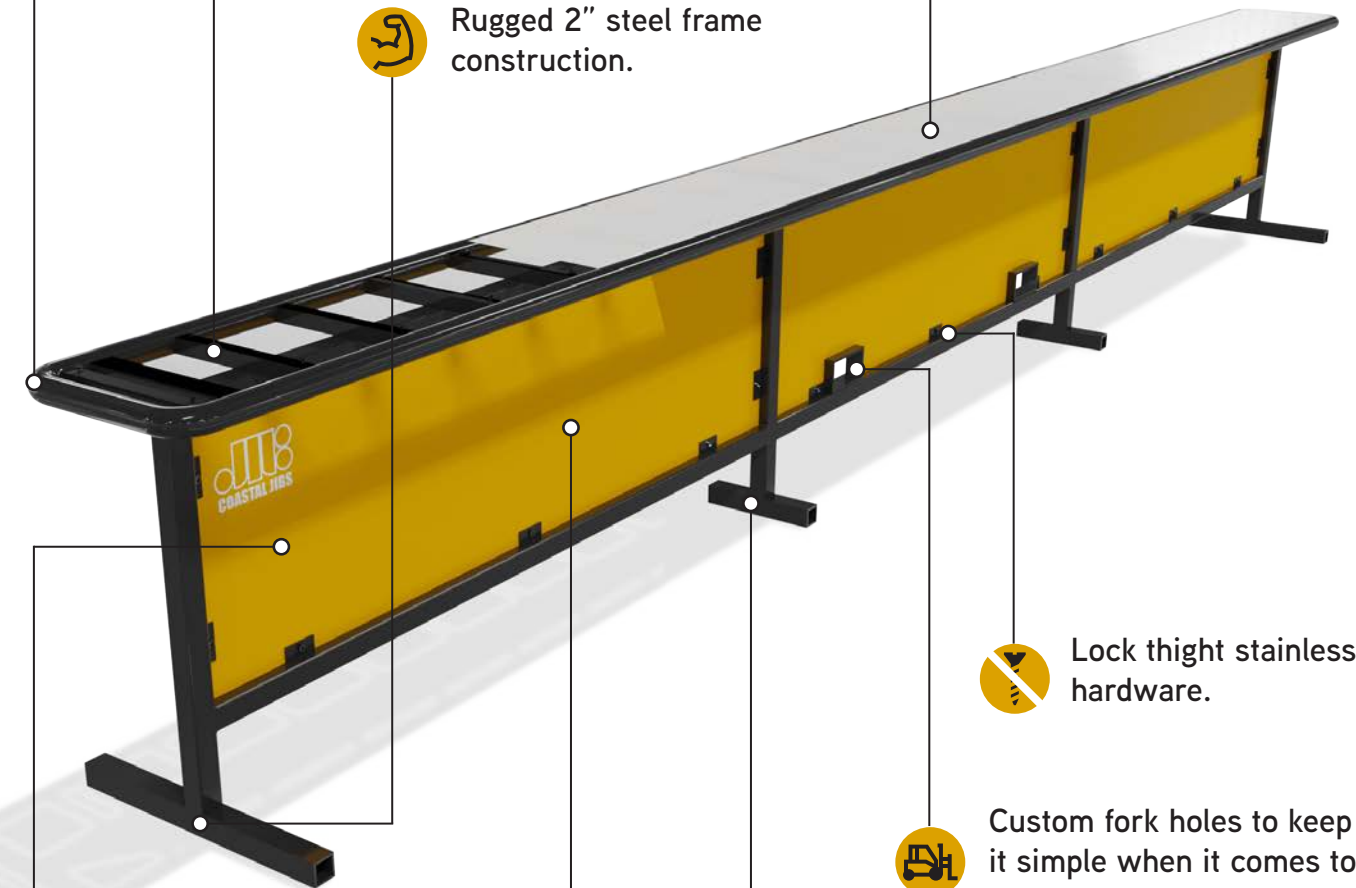
Superior quality 0.5" Uv treated HDPE sliding surface.



Laser cut supports that enable thermal expansion of plastic.



Rugged 2" steel frame construction.



Lock tight stainless hardware.



Custom fork holes to keep it simple when it comes to moving rails around.



Painted or galvanized frames to protect against rusting.



Smooth mdo plywood with weather resistant resin overlay.



Blend with the easthetics of your current set up or cre-ate a brand new look. Mix and match any color for your side skirting and frame.



**OUR PRODUCT REFLECTS OUR
PASSION FOR THE SPORTS**



△ Lake Louise, AB

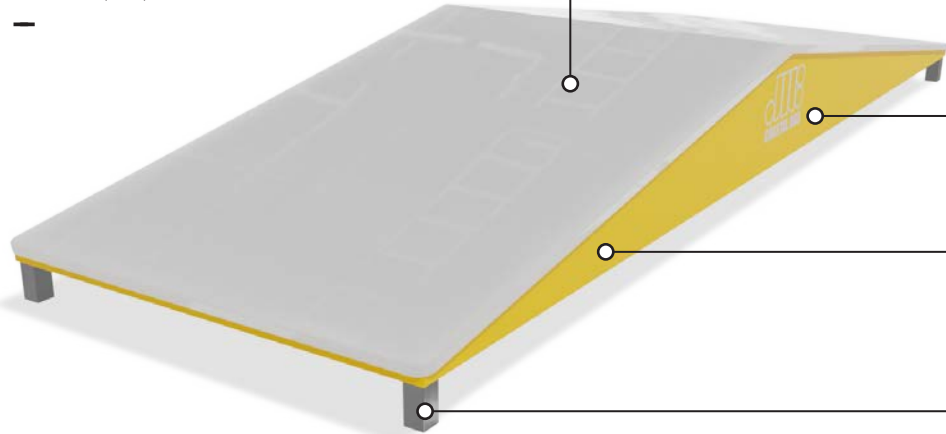
MINI-SHRED FEATURES

Designed for the next generation

The range of Mini shred features has been designed to target young riders. The miniature sizes as well as the nonexistent metal side profile make these accessible and safe for the kids. Thanks to their ground level entry and exit points, the Mini Shred features allow the little riders to enjoy an eased learning experience from their very first day at the mountain!

MINI ROOFTOP #MSRT

Length: 6'18"
Height: 8"
Width: 16"124"132"



Uv treated sliding surface.



Colorful aluminium panel skirting.



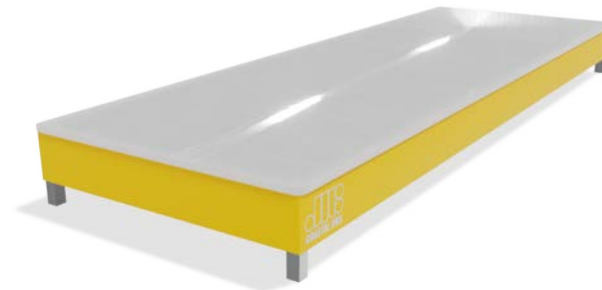
Lock thigh stainless hardware.



Light weight aluminium frame.

MINI FLAT #MSF

Length: 6'18"
Height: 6"
Width: 16"124"132"



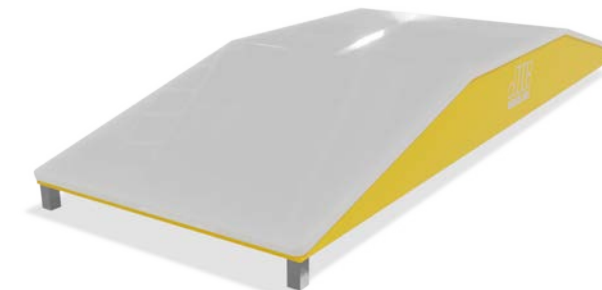
MINI RAMP #MSRA

Length: 6'18"
Height: 8"
Width: 16"124"132"



MINI BATTLESHIP #MSBA

Length: 6'18"
Height: 8"
Width: 16"124"132"



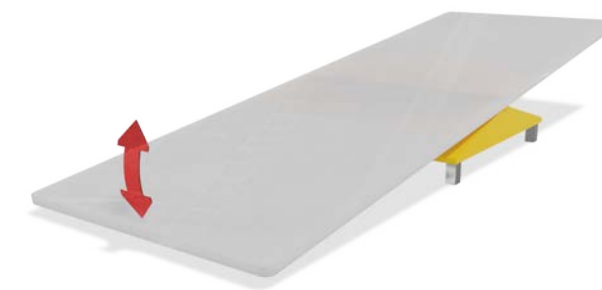
MINI RAINBOW #MSR

Length: 6'18"
Height: 8"
Width: 16"124"132"



TEETER TOTTER #MSTT

Length: 6'18"
Height: 10"
Width: 16"124"132"



HIGH FIVE #HF

Height: 42"





JUNIOR FEATURES

The first step to progress

The junior series consists of unique beginner obstacles that are ideal for all age groups. The wider surfaces and relaxed angles allow for entry-level skiers and riders to initiate themselves into the exciting world of rails and boxes. The higher skilled skiers and riders can also practice and perfect their technique safely on these mellow features!



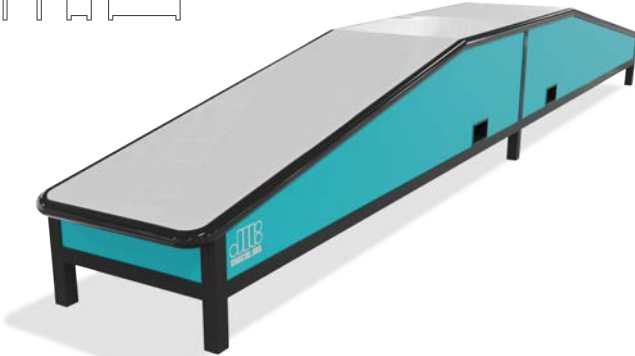
JR BUTTERBOX #JBU

Length: 12'116'
Height: 24"



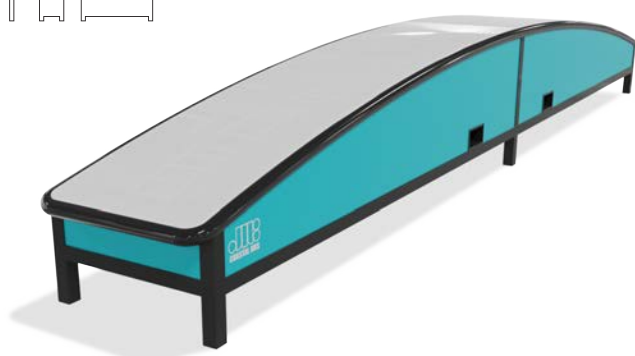
JR SUNKEN SHIP #JBA

Length: 12'116'
Height: 34"



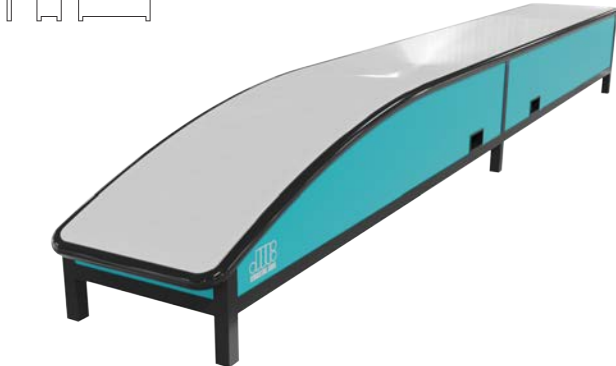
JR RAINBOW #JRB

Length: 12'116'
Height: 30"



JR RIDE ON #JRO

Length: 12'116'
Height: 24"



JR ROOFTOP #JRT

Length: 12'116'
Height: 30"



JR FLAT DOWN #JFD

Length: 12'116'
Height: 30"



JR WAVE #JWA

Length: 16'120'
Height: 34"



JR WHIP #JWP

***NEW**

Length: 12'116'
Height: 30"



JR STEP-DOWN #JSD

***NEW**

Length: 12'116'
Height: 28"



JR ROCKER #JRK

***NEW**

Length: 12'116'
Height: 30"



JR TUBE #JTU

Length: 12'116'
Diameter: 30"



Mont Tremblant, QC





CLASSIC FEATURES

Never out of style

All you could ever ask for! Over 500 formats available for intermediate to expert level skiers and riders. Every feature is available in different sliding surfaces. The right mix of classic features provides diversity and creativity for your terrain park. From a 4 in. diameter single pipe to a 42 in. dance floor. Coastal Jibs can meet the needs of all skill levels.



FLAT #F
Length: 16'|20'|24'|32'|40'
Height: 34"



FLAT DOWN #FD
Length: 20'|24'|32'|40'
Height: 34"



ROOFTOP #RF
Length: 20'|24'|32'
Height: 48"|60"



STREET DONKEY #SSD
Length: 16'|20'|24'|32'
Height: 34"



KICKER #K
Length: 16'|20'|24'|32'
Height: 48"



JAMMIN' #JMN
Length: 16'|20'|24'|32'|40'
Height: 34"



Shawnee Mountain, PA

BATTLESHIP #BA
Length: 24'|32'|40'
Height: 48"|60"



STEP-DOWN #SDN
Length: 20'|24'|32'
Height: 28"|34"



WATERFALL #WF
Length: 24'|30'|36'
Height: 40"



FIRECRACKER #FC
Length: 16'|20'|24'|32'
Height: 34"





Boler Mountain, ON

DOUBLE WAMMY+ #DW+

Length: 20'|24'|32'
Height: 34"



BUTTER PIPE #BP

Length: 16'|20'|24'|32'
Height: 34"



DOUBLE WHAMMY #DW

Length: 20'|24'|32'
Height: 34"



DOUBLE RAINBOW #DR

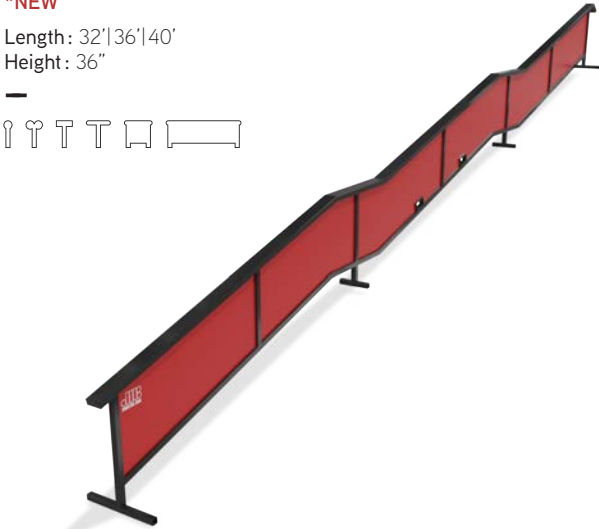
Length: 20'|24'|32'
Height: 34"



QUAD KINK #QK

***NEW**

Length: 32'|36'|40'
Height: 36"



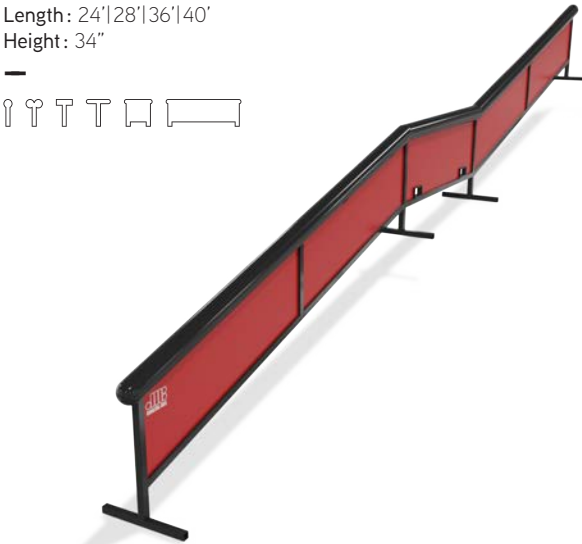
ELBOW #EL

Length: 20'|24'|32'
Height: 34"



DOWN-FLAT-DOWN #DK

Length: 24'|28'|36'|40'
Height: 34"



Y SHAPE #Y

Length: 20'|24'|32'
Height: 34"



DOUBLE ELBOW #DEL

Length: 24'|32'
Height: 34"



FLAT-DOWN-FLAT #FK

Length: 24'|32'|36'|40'
Height: 34"







PICNIC #PN
Length: 12'|16'|20'|24'|32'
Height: 36"



X BOX #X
Length: 20'|24'|32'
Height: 48"|60"



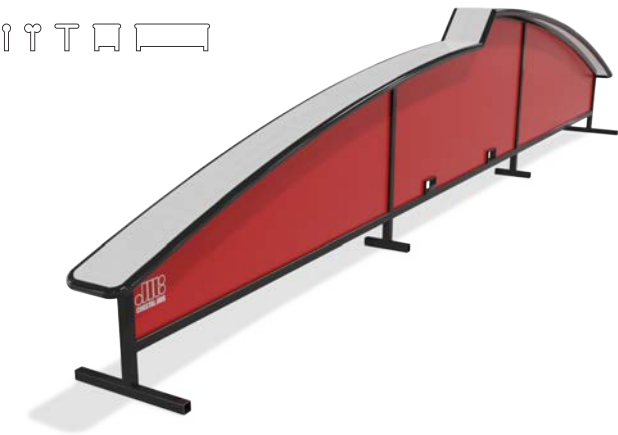
ROOFTOP PICNIC #RPN
Length: 20'|24'|32'
Height: 34"



BARN BOX #BRN
Length: 16'|20'|24'|32'
Height: 40"



DROP BOW #DB
Length: 20'|24'|32'
Height: 24"|60"



SHOT-DOWN #SD
Length: 20'|24'|32'|40'
Height: 48"



ROCKER #U
Length: 20'|24'|32'
Height: 40"|60"



MUSTACHE #MT
***NEW**
Length: 20'|24'|32'
Height: 42"



RAINBOW #RB
Length: 20'|24'|32'
Height: 60"|72"



RAINBOW C #RC
Length: 16'|20'|24'|32'
Height: 48"|72"



Mont Saint-Sauveur/Avila, QC

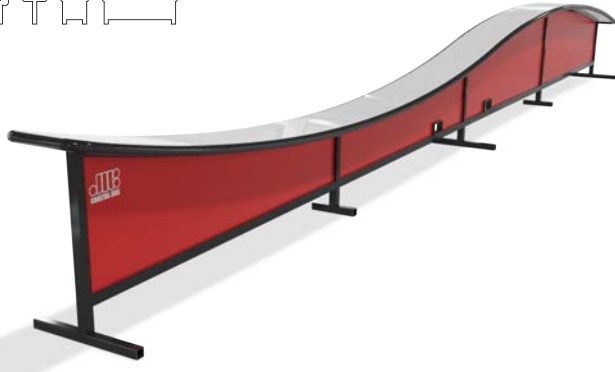


Mont Castor, QC

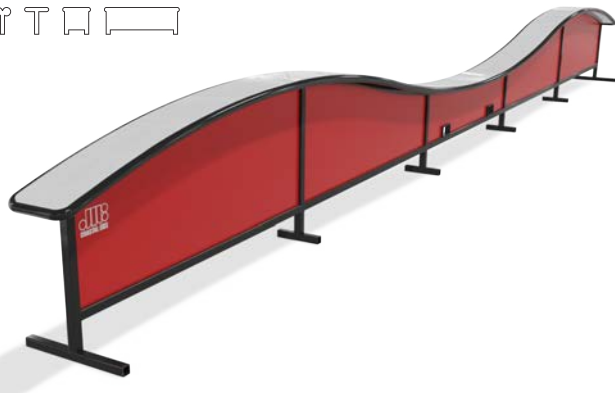
MACHETE #MA
Length: 20'124'32'140'
Height: 40"



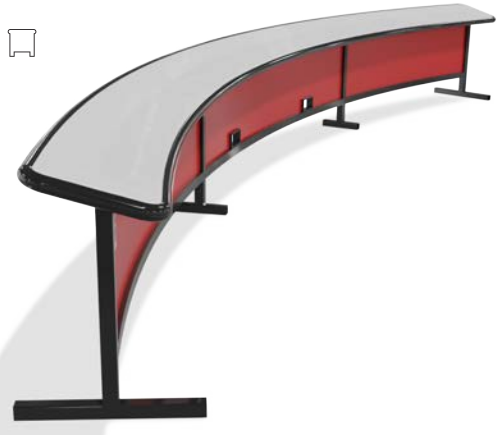
WAVE #W
Length: 24'32'140'
Height: 42"



CAMEL #CA
Length: 32'140'
Height: 42"



CURVE #C
Length: 16'20'24'32'
Height: 34"



S SHAPED #S
Length: 32'140'
Height: 34"



SNAKE RAIL #SN
***NEW**
Length: 32'36'140'
Height: 36"



Top left: Mont Carmel, QC Top right: Whiteface, NY Bottom: Mont Saint-Anne, QC





PIPES

Endless trick possibilities

—

Drawing their inspiration from the industrial scene, the pipes mimic the wacky forms of plant piping, providing a unique look. The wide diameter of these tubes allows a large contact surface, which facilitates the sliding for the riders. Their rounded shapes are the perfect solution to make the complex modules even safer.



FLAT #PF
Length: 16'|21'|24'|30'|34'
Height: 36"
Diameter: 6"|8"|10"



SWAT PIPE #PSP
Length: 16'|21'|24'|34'
Height: 36"
Diameter: 6"|8"|10"



FLAT DOWN #PFD
Length: 21'|24'|30'|34'
Height: 36"
Diameter: 6"|8"|10"



ROOFTOP #PRT
Length: 21'|24'|30'|34'
Height: 60"|72"
Diameter: 6"|8"|10"



DOWN FLAT #PDF
Length: 16'|21'|24'|30'
Height: 36"
Diameter: 6"|8"|10"



DOWN FLAT DOWN #PDK
Length: 24'|30'|34'
Height: 36"
Diameter: 6"|8"|10"



Side skirting
All pipes are also available with side skirting.



Top:
Mont Sutton, QC
Bottom:
Ski La Réservé, QC

STEP DOWN #PSD
Length: 21'|24'|30'|34'
Height: 42"
Diameter: 6"|8"|10"



WATERFALL #PWF
Length: 24'|30'|34'
Height: 48"
Diameter: 6"|8"|10"





ELBOW #PE
Length: 21'24'30'34'
Height: 36"
Diameter: 6"8"10"



Z SHAPE #PZ
Length: 24'30'34'
Height: 36"
Diameter: 6"8"10"



BATTLESHIP #PBA
Length: 24'30'34'
Height: 56"72"
Diameter: 6"8"10"



Y SHAPE #PY
Length: 21'24'30'34'
Height: 36"
Diameter: 6"8"10"



WAVE PIPE #PW
***NEW**
Length: 24'30'34'
Height: 42"
Diameter: 6"8"



RAINBOW #PR
Length: 16'21'24'30'
Height: 60"72"
Diameter: 6"8"



HICCUP #PHC
Length: 21'24'30'34'
Height: 42"
Diameter: 6"8"10"



C SHAPE #PC
Length: 16'21'24'30'
Height: 36"
Diameter: 6"8"



S SHAPE #PS
Length: 24'30'34'
Height: 36"
Diameter: 6"8"



SEX CHANGE #PSC
Length: 16'21'24"30'
Height: 72"
Diameter: 6"8"10"



Craigleith Ski Club, ON



JIBS

Release your creativity

Our Jibs series consists of unique shaped features, which presents multiple trick possibilities to all the hard-core jibbers out there. These are built mostly out of metal for an old school feel.



JIB TANK #TNK
Length: 16'|20'|24'|30'
Height: 36"
Diameter: 20"|24"|30"|60"



KINKED TANK #KTK
Length: 20'|24'
Height: 60"
Diameter: 20"|24"|30"



BONK TANK #BT
Height: 4'|8'
Diameter: 30"|60"



ELBOW TANK #ETK
Length: 20'
Height: 36"
Diameter: 20"|24"|30"



DONKEY TANK #DKT
Length: 16'|20'|24'
Diameter: 20"|24"|30"



SHORT TANK #STK
Length: 4'|6'|8'
Height: 36"
Diameter: 20"|24"|30"



Shawnee Mountain, PA

BALL #BL
Diameter: 42"|84"



LOLLYPOP #LP
*NEW
Height: 72"|84"|96"
Diameter: 36"|42"



JERSEY BARRIER #JB
Length: 10'|12'|14'|16'
Height: 36"



BANKED BARRIER #BB
*NEW
Length: 12'|16'|20'|24'
Height: 60"



MUSHROOM #MU
Height: 48"
Diameter: 36"|48"





COPING #CP
Length: 8'|16'|20'|24'
Height: 24"



WHEEL #WL
Width: 40"
Diameter: 8'|10'|12'



GATE #GA
Length: 14'
Height: 40"
Diameter: 6"



OCTO TUBE #OT
Length: 16'|20'|24'
Width: 8"
Height: 40"



CANON #CA
Length: 12'|14'|16'|20'
Height: 60"|72"
Diameter: 6"|8"|10"



POLE JAM #PJ
Length: 6'|8'|10'
Diameter: 4"|6"|8"



MAILBOX #ML
Length: 10'|12'|16'|20'|24'
Width: 16"|30"
Height: 24"



KINKED MAILBOX #KML
Length: 20'|24'|32'
Width: 16"|30"
Height: 24"

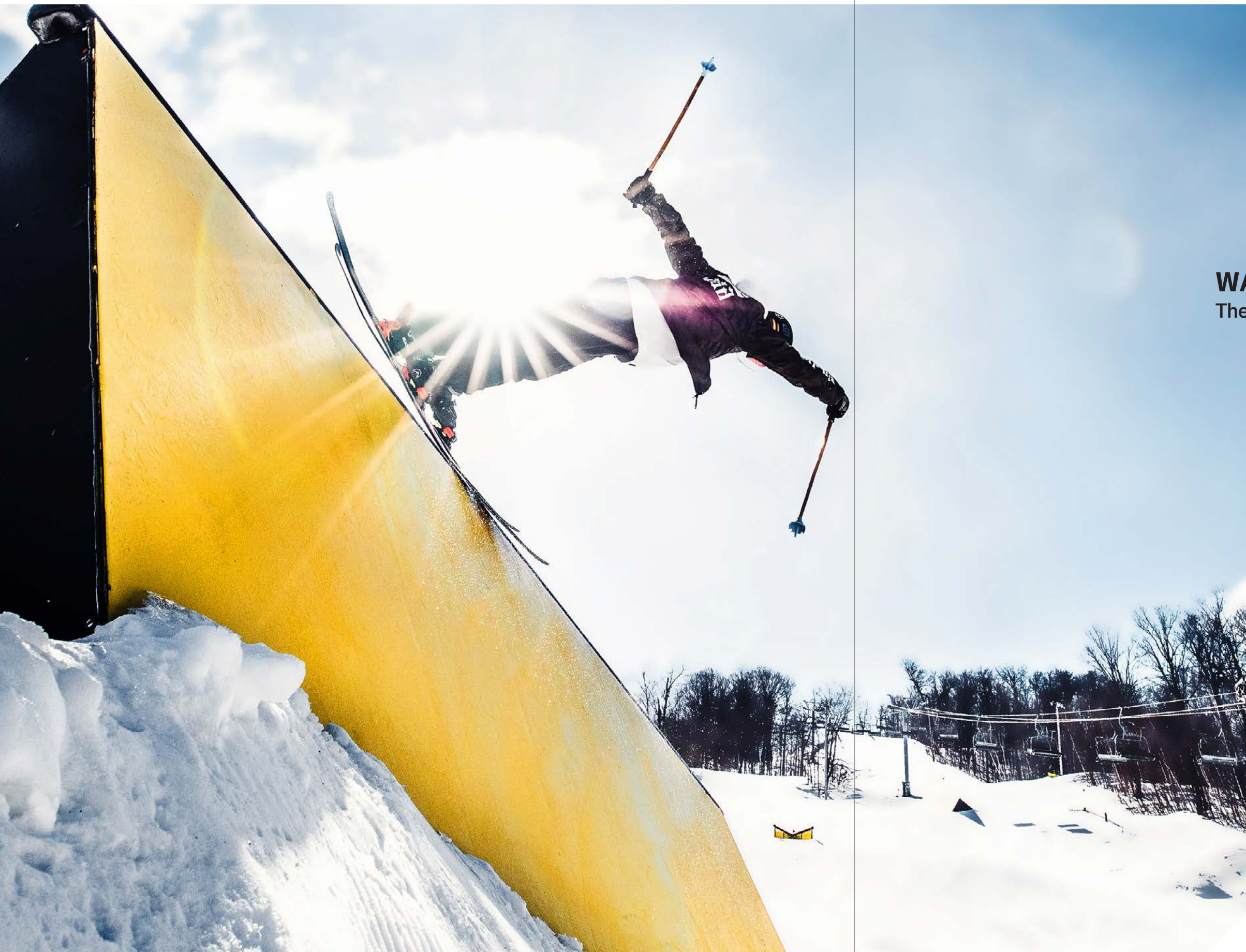


JUNK MAIL #JML
Length: 24'|28'|32'
Width: 16"|30"
Height: 24"



Top:
Ski Bromont QC
Bottom:
Mont Orford, QC





WALLRIDE FEATURES

The centerpiece of your snowpark

Wall rides are often some of the biggest and most impressive features of any terrain park. Their large surfaces are ideal display areas for graphics and sponsor logos. To facilitate the moving of wall rides, we weld them to a ski-type frame, so they can be slid rather than lifted! All wall surfaces are covered with HDPE plastic to ensure the best sliding sensation.



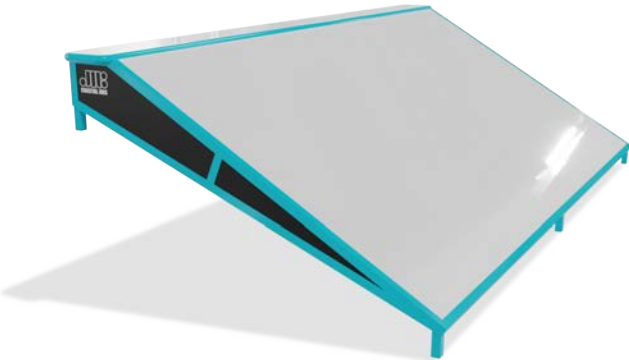
WALLRIDE #WA
Length: 8'|16'|20'|24'
Height: 8'



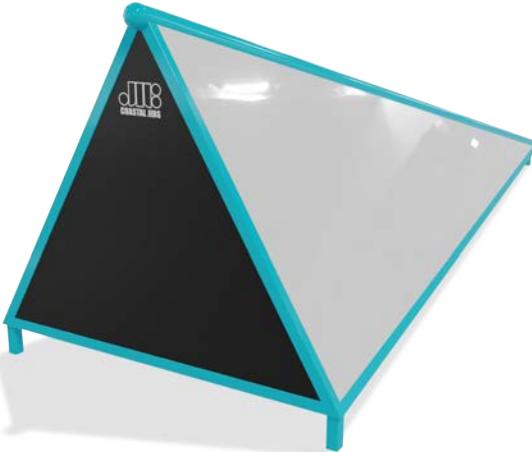
ROOF #RF
Length: 16'|20'|24'
Height: 48"



BANKED WALL #BW
Length: 16'|20'|24'
Height: 24"



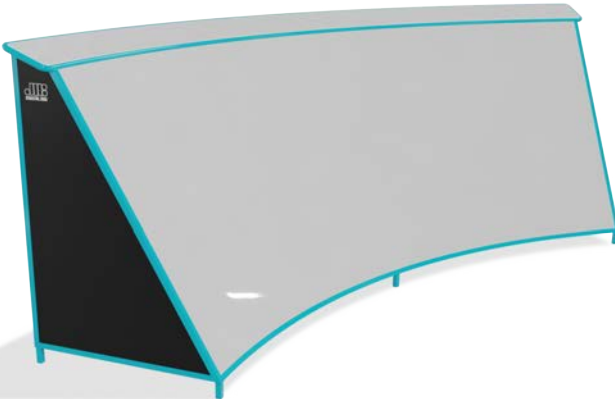
STAR WARS #STW
Length: 16'|20'|24'|32'
Height: 60"|72"



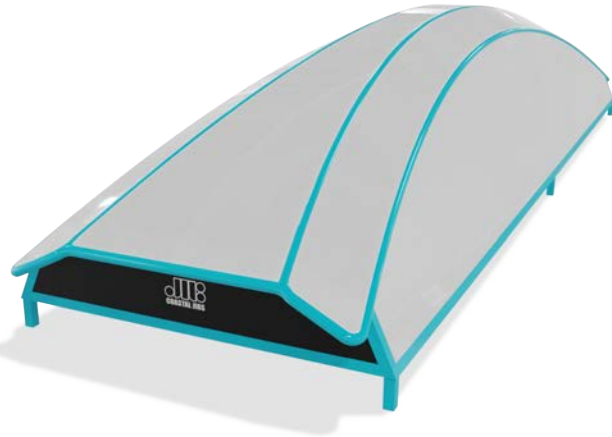
SPINE #SP
Length: 8'|16'|20'
Height: 72"



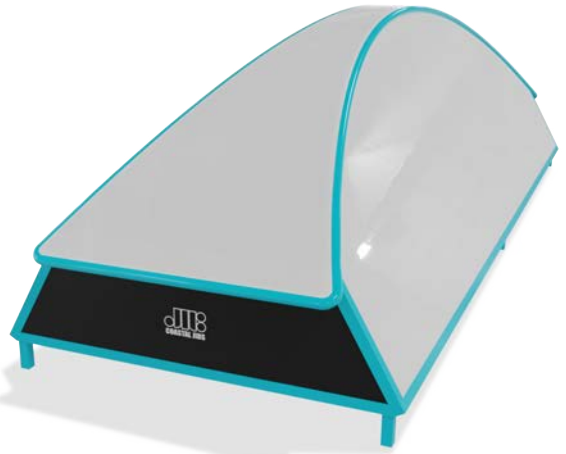
CURVE WALL #CW
Length: 16'|20'|24'
Height: 8'



TURTLE SHELL #TS
Length: 20'|24'|32'
Height: 48"|60"



RAINBOW WALL #RW
Length: 16'|20'|24'|32'
Height: 72"



SKINNY WALL #SW
Length: 1'|2'|4'
Height: 8'



Horseshoe Resort, ON



Mont Tremblant, QC





CUSTOM FEATURES

Let your imagination run free

🏔️ Empire Games, Bromont, QC

At Coastal Jibs, we provide top quality event set-ups that will blow the mind of your competitors and spectators. We offer custom features allowing you to create the course of your dreams! Whether it's replicating an existing urban environment with complex staircase configurations or creating a unique set up that will give you the atmosphere you want, we can do it all! Sponsors and media play a big role in the event world and we want to help you make an impact by creating something original. Challenge us with your ideas and visions and we will make your projects become reality!



"WE ALWAYS TRUST COASTAL JIBS FOR THE MANUFACTURE OF OUR TERRAIN PARKS AND EVENTS RAILS AND BOXES. THE COASTAL JIBS MERCHANDISES ARE QUALITY PRODUCTS THAT MEET OUR HIGH STANDARDS."

🏔️ Top:
Today's Canvas,
Stoneham, QC
Bottom:
Ride Shakedown 2014
Mont Saint-Sauveur, QC





SNOWTOOLS

Your park staff's best friends

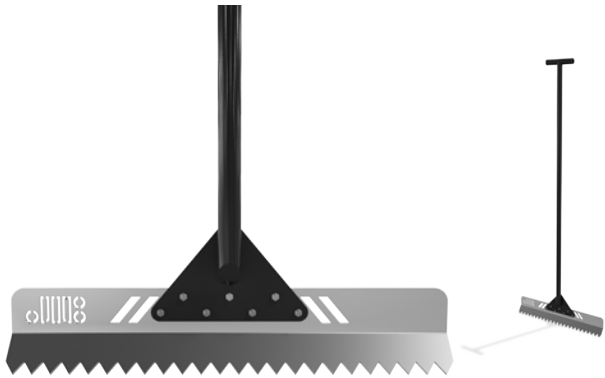
 Ski La Réserve, QC

Would you cut steak with a plastic knife ? Neither would we. Building a nice terrain park is one thing but maintaining it is a different story. That is why we offer specialized snowtools that can make your job more enjoyable. The versatility of these tools lets you accomplish your job more efficiently and faster than ever before.

SWINGER

Length: 60"
Width: 24"

From maintaining lift stations to working on pipe transitions, the Swinger is the ideal snow tool for all jobs, whether small or medium sized. Its light-weight and sharp teeth allow you to easily cut through hard snow and ice.



SCOOP

Length: 60"
Width: 26"

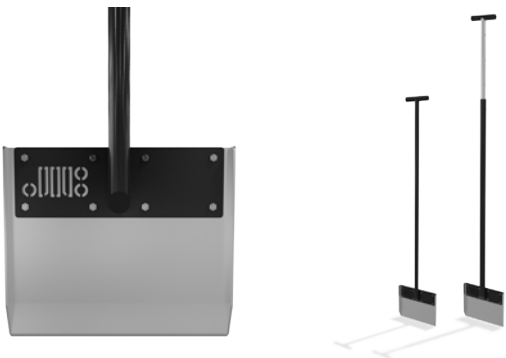
Digging out features after a big dump of snow? No problem ! The large scoop has a larger blade that allows you to move great quantities of snow around. Ideal for heftier tasks.



VERT SHOVEL

Length: 60"
Width: 10"
Telescopic handle option


This razor-sharp stainless steel blade will make the sides of your jumps look like Lego Blocks ! Ideal for shaping hips, berms, and anything that needs a precise clean cut.



ALUMINIUM

The powder coated aluminum makes for a tough finish that does not allow the snow to stick to the blade, making it lighter and more enjoyable to use.

Rugged aluminum construction, laser-cut teeth and perfect blade angles make these tools your park staff's best friends !

 Bromont, QC





ACCESSORIES All you ever needed

 Ski La Réserve, QC

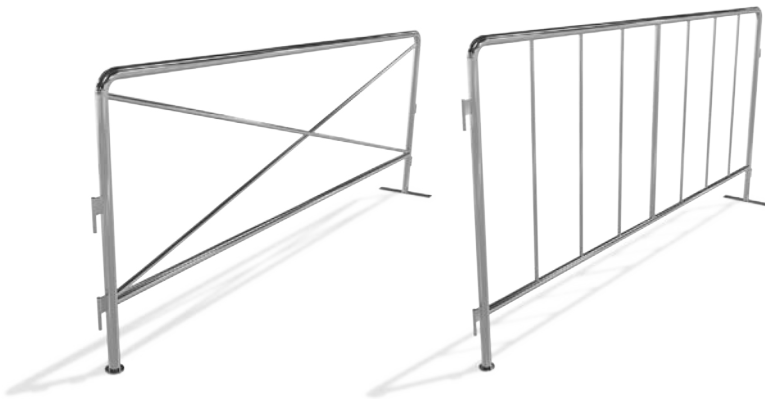
PARK BENCH

Length: 8'12"16'
Height: 36"



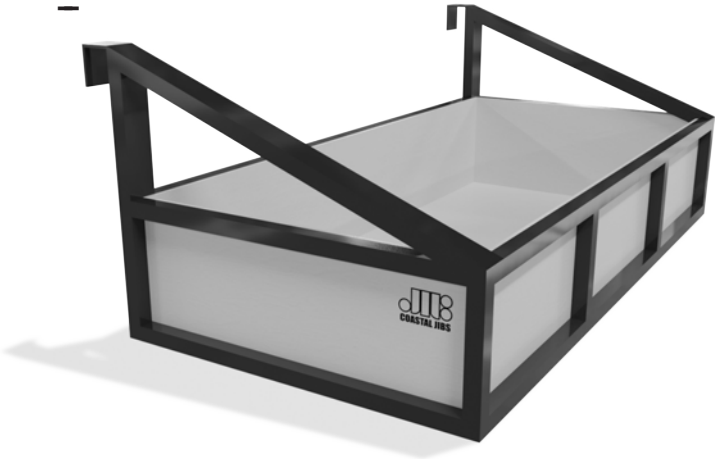
TRAFFIC GATES

Length: 96"
Height: 36"142"



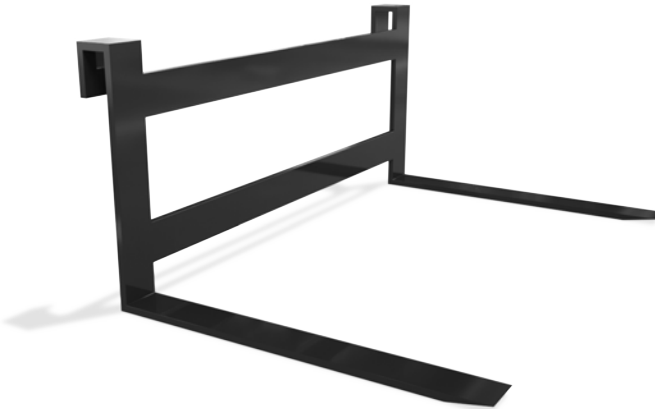
BASKET

Length: 4'
Width: 6'



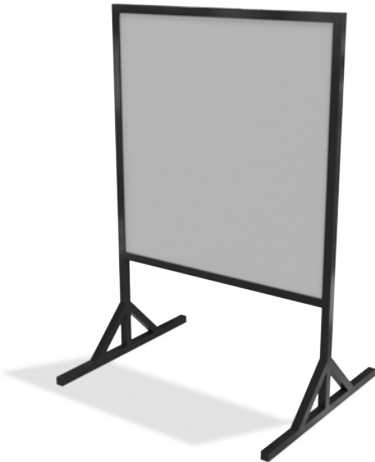
ADJUSTABLE GROOMER FORKS

Length: 4'
Width: 2' - 6'



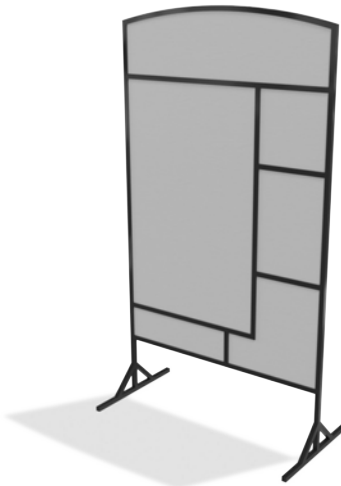
SIGN FRAMES

Length: 24'36'
Height: 4'8"



MULTI SIGN FRAME

Length: 48"
Height: 10'



GRAPHICS

Advertisement and graphics often play a large role in the everyday Terrain Parks. The unique shapes and large display areas of rails and boxes become the ideal location for your resort's logos and sponsors! We offer top quality vinyl graphics and artwork on our smooth side panels. Ask us for more details.

OBSTACLE MAINTENANCE

We now offer a module maintenance service for our clients. This turnkey service is carried out directly on-site at your resort and allows to extend the life of your obstacles, but, especially, to ensure your customers' safety. Please contact us for more information.

DELIVERY

Coastal Jibs offers delivery at extremely reasonable rates across all of Eastern Canada & U.S., not to mention FREE shipping on park orders of at least \$25,000 CAD.

PHOTO CREDITS

Cover page : Étienne Dionne
p.2 : Pat Boissonnault
p.4, 44, 46 : Today's Parks
p.6 : James Mackeigan
p.8 : Kevin Lemaire
p.10 : Burton Snowboards
p.12, 23, 49 : Alain Denis
p.15 : René-Pierre Normandeau
p.16 : Christian Falardeau
p.19, 35 : Robert Farris

p.20 : Angus Thomson
p.27 : Matt Petricorne
p.28 : Snowmission
p.31, 32 : Marc-André Lavoie
p.32, 51 : Richard Côté
p.39 : Live Fast Media and Eric Lamothe
p.40 : Mathieu Tranchida
p.43 : Joseph Roby and Geoffroy Dubreuil
p.44, 45 : Daniel Mathieu
p.45 : Eric Lamothe
p.52 : Andy Vadis



Top:
Saint-Bruno, QC
Bottom:
Stoneham, QC



Left:
Okemo Mtn, VT
Right:
Saint Sauveur - Avila, QC







COASTAL JIBS

WE BUILD WHAT YOU RIDE

2020/2021